



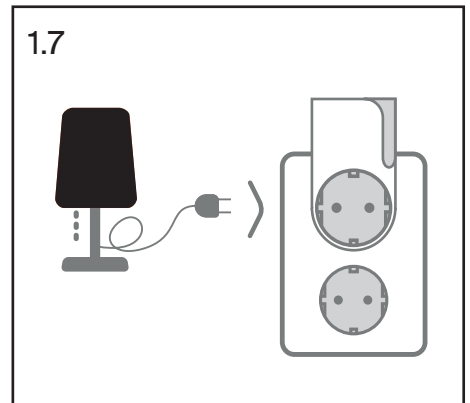
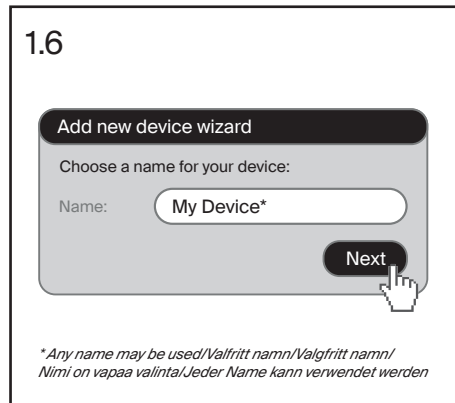
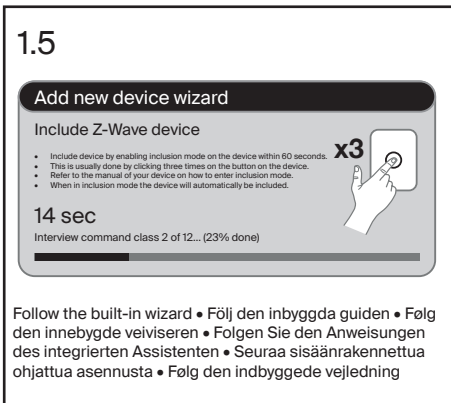
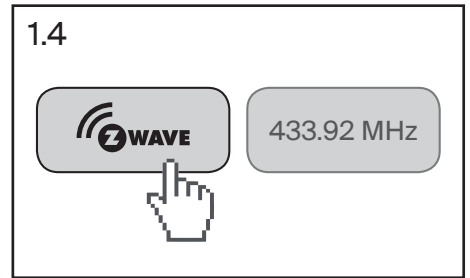
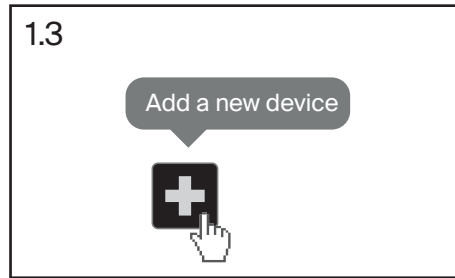
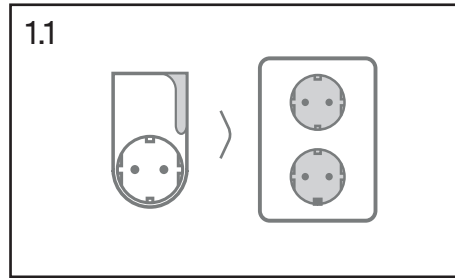
QUICK GUIDE

Easy installation of your Telldus Z-Wave Range Extender with On/Off & Timer Outlet



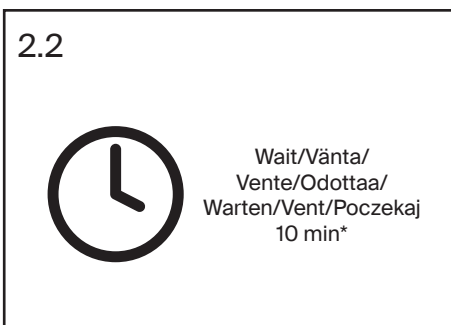
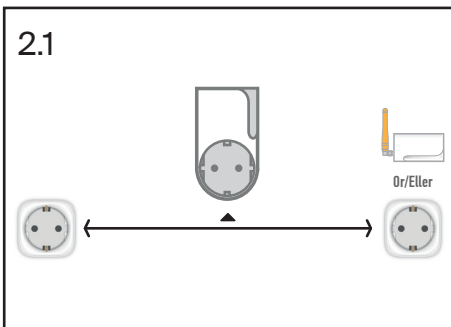
1. Include the device in Telldus Live

Lägga till enheten i Telldus Live • Inkludere enheten i Telldus Live • Das Gerät in Telldus Live einschließen
Laitteen liittäminen Telldus Live • Inkludere enheden i Telldus Live



2. Placing the device

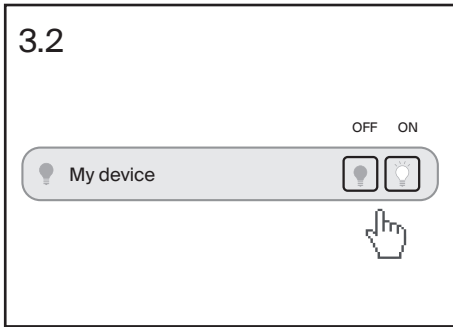
Placering av enheten • Plassering av enheten • Platzierung des Gerätes • Laitteen sijainti • Placering af enheden



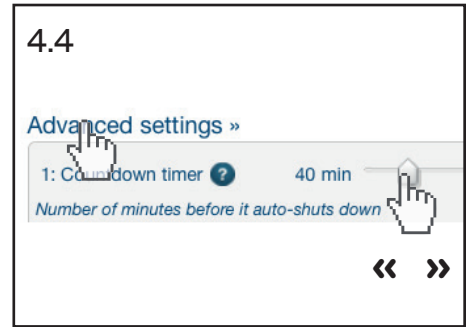
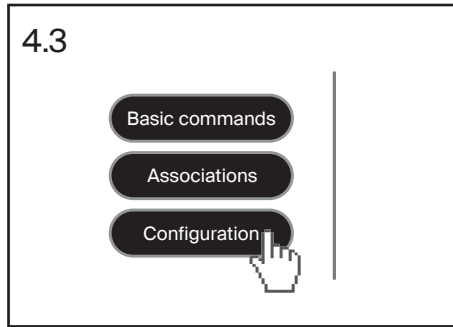
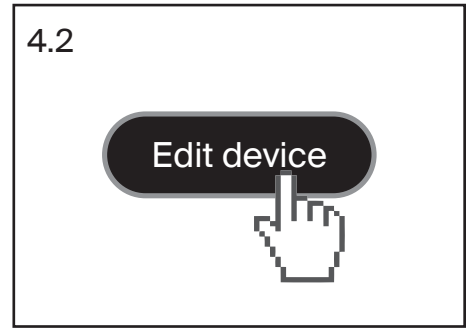
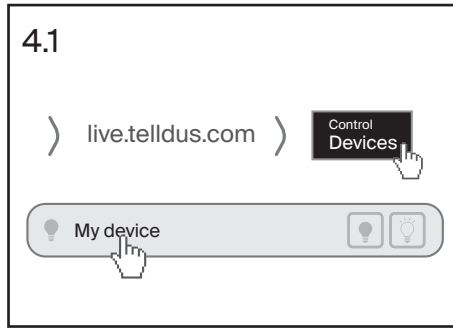
* Please note: The Z-Wave mesh network-routing is updated automatically. It is normally done within 10 minutes but can take up to 24 hours. In order to update the routing of battery powered Z-Wave devices they need to be awake. Please refer to the user manual of your device in order to wake it up. Depending on the device it can take several updates before it discovers the new route.

* Vänligen notera: Rutterna i Z-Wave-nätverket uppdateras automatiskt. Detta sker vanligen inom 10 minuter men kan i vissa fall ta upp till 24 timmar. För att uppdatera ruten för en batteridrivna Z-Wave-enhet krävs att enheten är vaken. Se enhetens användarmanual för instruktioner om hur du väcker den. Beroende på vilken enhet du har kan det ta flera uppdateringar innan enheten hittar den nya ruten.

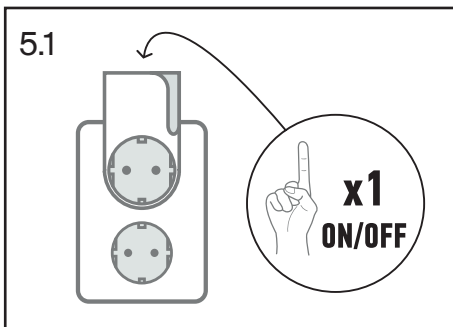
3. Control the device in Telldus Live
 Styra enheten i Telldus Live • Styre enheten i Telldus Live • Das Gerät in Telldus Live steuern • Laitteen ohjaaminen Telldus Live • Styring af enheden i Telldus Live



4. Edit the device and use the countdown timer
 Redigera enheten och användna nedräkningstimern • Redigere enheten og bruke nedtellingstimeren • Das Gerät bearbeiten und den Countdown-timer benutzen • Muokkaa laitetta ja käytä lähtölaskenta-ajastin • Redigér enheden og brug nedtællingstimeren

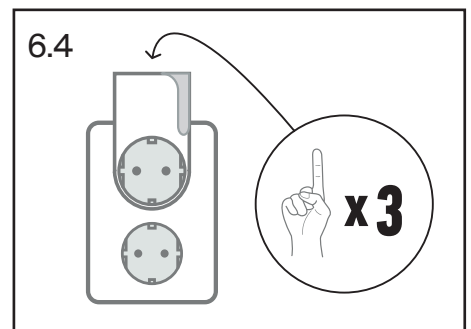
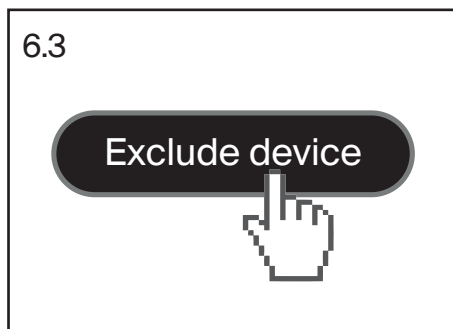
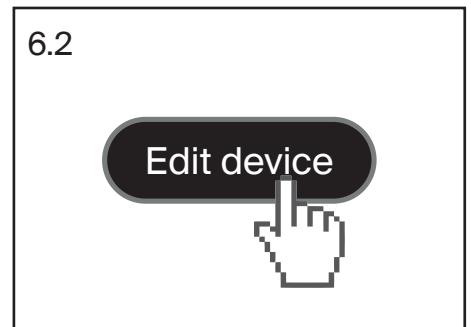
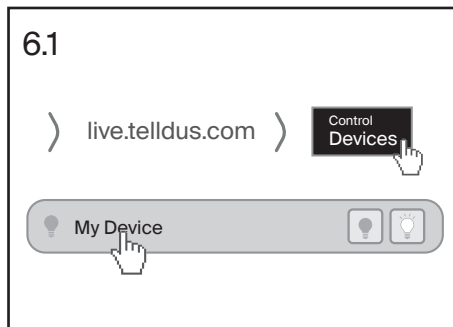


5. Control the device manually
 Styra enheten manuellt • Styre enheten manuelt • Das Gerät manuell steuern • Laitteen ohjaaminen manuaalisesti • Manuel styring af enheden



- Download complete technical manual and find more useful information at tellus.com
- Ladda ner fullständig teknisk manual och hitta mer nyttig information på tellus.com
- Last ned den komplette tekniske håndboken og finn mer nyttig informasjon på tellus.com
- Laden Sie das vollständige technische Handbuch herunter und finden Sie weitere nützliche Informationen unter tellus.com
- Lataa kattava tekninen opas ja katso lisätietoja seuraavasta osoitteesta tellus.com
- Download den fulde tekniske vejledning, og find mere nyttig information på tellus.com

6. Exclude the device
 Exkludera enheten • Ekskluder enheten • Das Gerät ausschließen • Poista laite • Ekskluder enheden



Specifications/Specifikationer/Spesifikasjoner/Tekniset tiedot/Technische Spezifikationen/Dane Techniczne
 Function/Funktion/Funksjon/Toiminto: Repeater/On/Off/Timer; Repeater/På/Av/Timer; Repeater/På/Af/Timer; Repeater/Ein/Aus/Timer; Toistin/Päälle/Pois/Ajastin
 Range/Räckvidd/Rekkevidde/Aktionsradius/Rækkevidde/Kantomatka: 0-30 meter
 Frequency/Frekvens/Frequenz/Taajuus: 868.42 MHz (EU)
 Power supply/Strömförsörjning/Strømforsyning/Stromversorgung/Virtalähde: 230 V~50 Hz
 Operating Temperature/Temperatur/Lämpötila: 0°C - +40°C
 Max load/Max belastning/Maks. Belastning/Maximale Leistung/Enimmäiskuormitus: 2300 W / 10 A
 Z-Wave chip: 500 Plus



Proove AB
 Birger Svensson Väg 34 B, 432 40 Varberg, Sweden
 www.tellus.com • support.tellus.com

