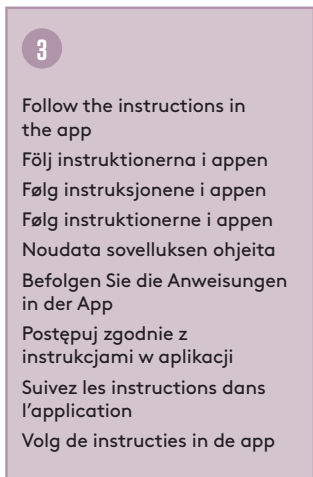
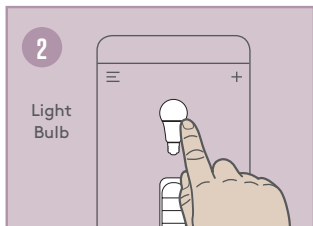
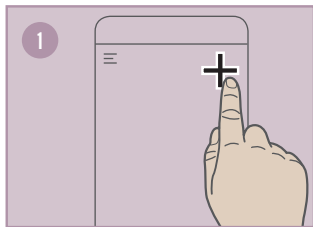
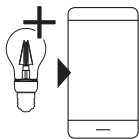


# SIMPLE SETUP

ADD THE BULB IN APP



Smartline®

# LIGHT BULB

# QUICK GUIDE

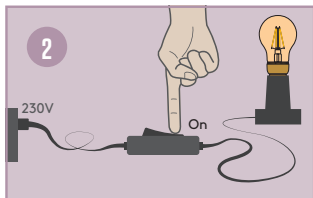
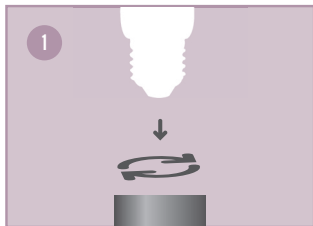


It is simple to use the Smartline Flow devices. Just follow the instructions in this quick guide and you will have it up and running in no time.

■ ■ Swedish  
■ ■ brand

# SIMPLE SETUP

INSTALL THE BULB



Before moving on to the next steps make sure your device has Bluetooth turned on.

Innan du går vidare till nästa steg så säkerställ att Bluetooth är påslaget i din enhet.

Kontroller at Bluetooth på enheten din er på før du går videre til neste trinn.

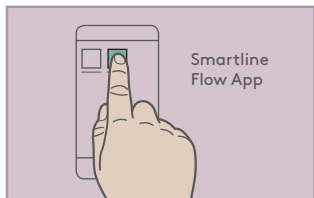
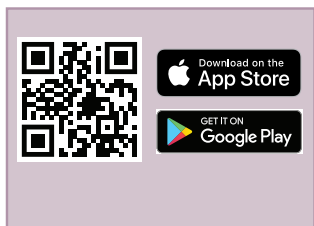
Før du går videre til de næste trin, skal du sørge for, at Bluetooth er slået til på din enhed.

Ennen seuraaviin vaiheisiin siirtymistä varmista, että laitteen Bluetooth-toiminto on käytössä.

Bevor Sie mit dem nächsten Schritt fortfahren, überzeugen Sie sich davon, dass auf Ihrem Gerät die Bluetooth-Funktion eingeschaltet ist.

# SIMPLE SETUP

DOWNLOAD APP



Przed przejściem do następnych czynności dopilnuj, aby w urządzeniu włączone było Bluetooth.

Avant de passer aux étapes suivantes, assurez vous que le Bluetooth soit activé sur votre appareil.

Controleer voordat u doorgaat naar de volgende stappen of Bluetooth op uw apparaat is ingeschakeld.

---

Smartline is a Swedish brand owned and marketed by Proove AB.  
Kabelvägen 7, 31150 Falkenberg  
+46 (0)346-715600

[www.smartlinesweden.com](http://www.smartlinesweden.com)  
[info@smartlinesweden.com](mailto:info@smartlinesweden.com)